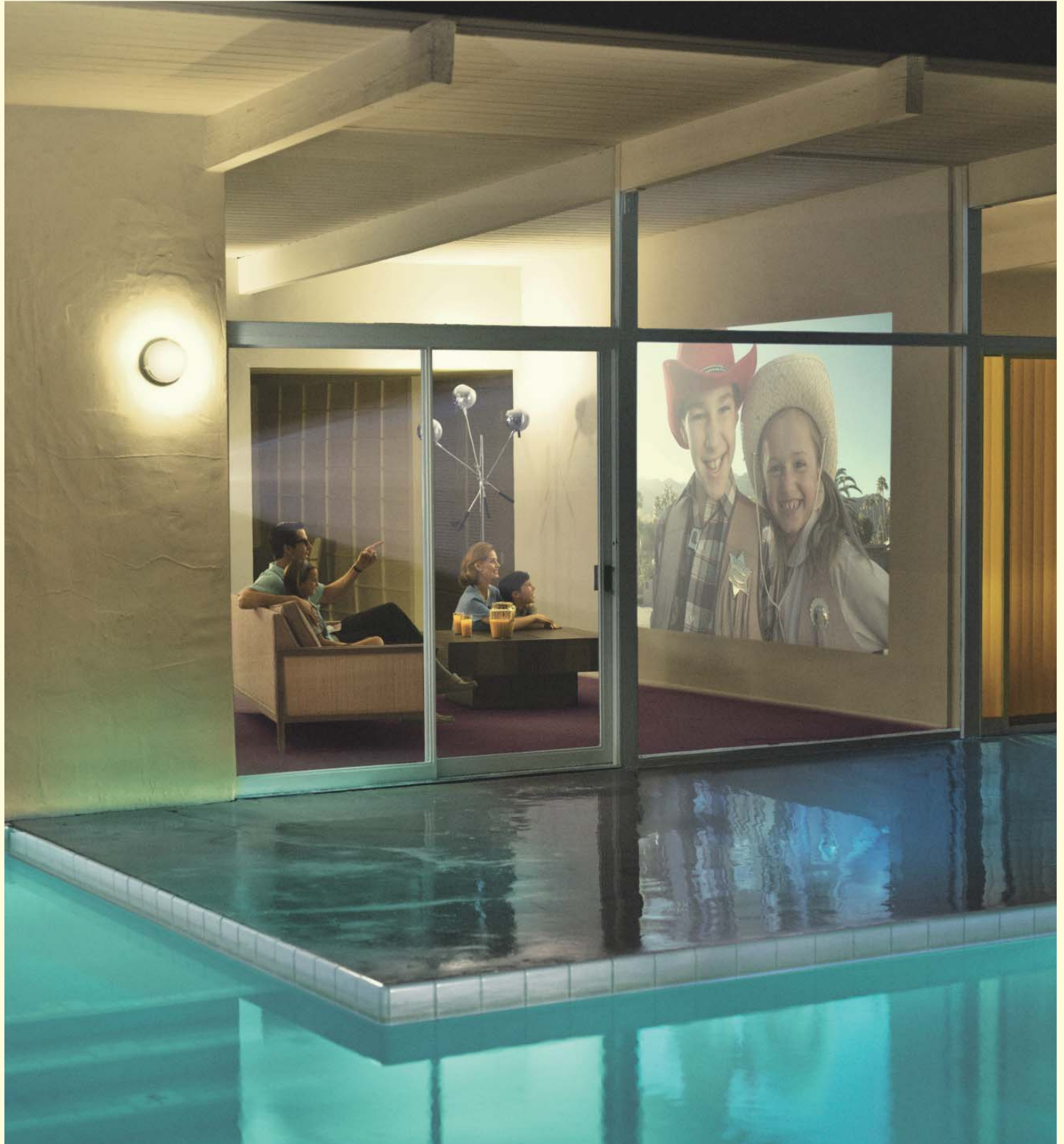


Panasonic
ideas for life

PT-P1SD
Digital SD Slide Projector



Make Them Your Audience

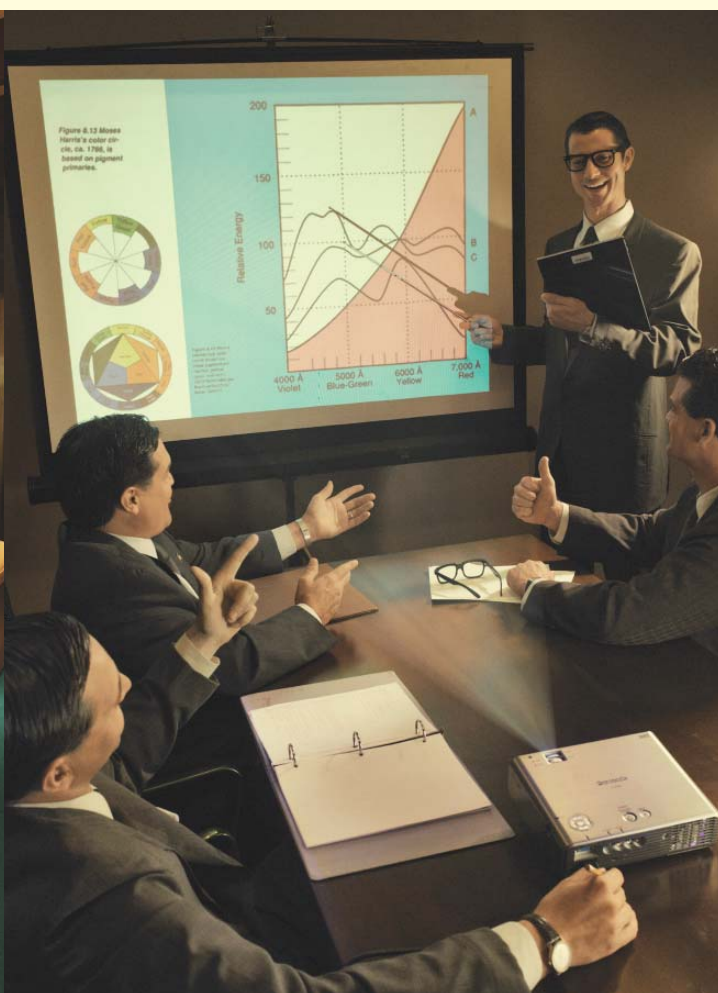
The PT-P1SD gives you a fantastic way to enjoy the photos you take. Just remove the SD memory card from your camera and slip it into the card slot, to project clear, beautiful photos on a huge screen. You'll find the PT-P1SD easy to use even if you have never used a projector before.





Make Them Your Audience

Remember your trip to the mountains, sitting around the campfire, and making a snowman by the ski lounge. Or recall getting together for your loved one's birthday party? What happened to all the digital photos you took? Great memories are meant to be shared. And with a Panasonic PT-P1SD projector, you can share the memories by displaying your photos as huge images to re-live the moment. The PT-P1SD is easier to use than your dad's old slide projector. Just take the SD memory card out of your camera, slip it into the projector, and enjoy. You can also connect it to your TV, video player, DVD player or laptop. Share the fun with the PT-P1SD, today's new-generation digital slide projector.



■ Direct SD Card Projection

Simply aim the PT-P1SD at the screen and plug the power cord into an outlet. When you slip an SD card into the card slot, the PT-P1SD automatically turns on and is ready to display digital still images*¹ or moving pictures*². To display an image, just select it from the thumbnails using the supplied remote control.

■ Digital SD Slide Show

If you like, you can view all the photos in a folder as a slide show. You can select any of several types of transitions between slides, including Wipe, Fade, Split, Blind, Checker, Slide In, Random and Off. You can also run a slide show of favorite images in DPOF*³ form. The PT-P1SD features automatic photo rotation function*⁴.

■ PC-Free Presentations

The PT-P1SD makes it easy to give a PowerPoint® presentation without a laptop. Just use Panasonic's Image Creator software to convert the Microsoft PowerPoint® file to a JPEG file, and you can leave your laptop at home or the office. The PT-P1SD also features a presentation mode that starts a slide show automatically when you put an SD card into the card slot*⁵.

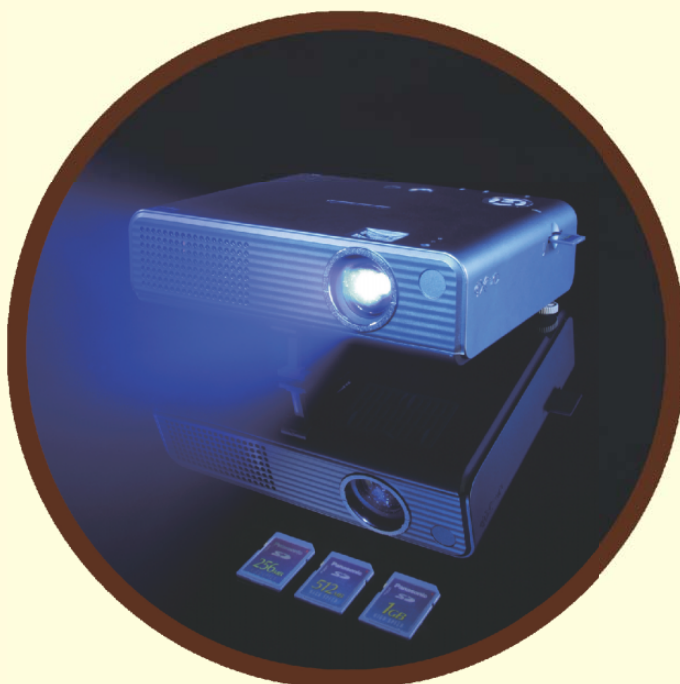
■ Lightweight and Compact

You'll find the PT-P1SD easy to carry, too. It's the world's lightest*⁶ projector of its kind, and the smallest. It weighs only 1.3 kg (2.9 pounds) and measures just 23.4 cm x 18.8 cm x 6.5 cm (9.2" x 7.4" x 2.6"). Its footprint is around 30% smaller than a sheet of A4 or letter-sized paper. The unit is small enough to carry around in a bag or briefcase.

■ More Fantastic Features

- DVD/Video/PC input capability • HDTV compatibility • Speed start
- Auto search • Real-time keystone correction • Direct power off • LED input signal indication • Operation assistance • Daylight View
- Security features: SD card key and password control lock • Card remote control

For detailed explanation of features please visit our website ; URL address is located in the back page.





Front View



Top View

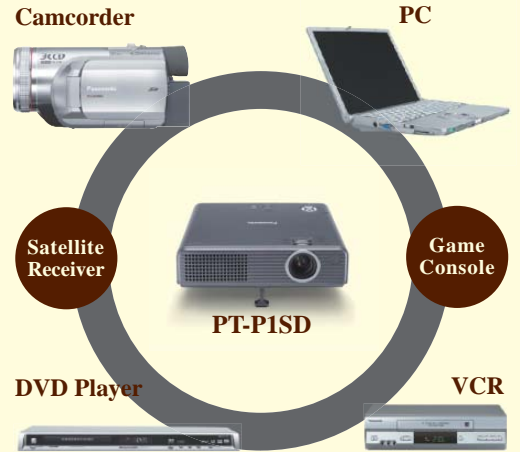


Rear View



Remote Control

Connection Flexibility for More Entertainment



Specifications

| | |
|---------------------------|--|
| Power supply | 100 – 240 V AC, 50/60 Hz |
| Power consumption | 180 W (3 W in standby mode with fan stopped) |
| Optical system | Dichroic mirror separation/prism synthesis system |
| LCD panel | 4:3 aspect ratio |
| Panel size | 0.6" (15.24 mm) diagonal |
| Display method | Transparent LCD panel (x 3, R/G/B) |
| Pixels | 480,000 (800 x 600) x 3, total of 1,440,000 pixels |
| Lens | Manual zoom (1:1 – 1:1.2), manual focus, F 1.7 – 1.8, f 17.0 – 20.4 mm |
| Lamp | 130 W UHM™ lamp |
| Colors | Full color (16,777,216 colors) |
| Brightness | 1,500 lumens |
| Uniformity | 90% |
| Contrast | 400:1 (full on/full off) |
| Resolution | |
| RGB | 800 x 600 pixels (1,600 x 1,200 pixels with compression) |
| Video | 600 TV lines (horizontal resolution) |
| Scanning frequency | |
| RGB | Horizontal: 15 – 91 kHz, Vertical: 50 – 85 Hz |
| YPbPr | 480i (525i), 576i (625i), 480p (525p), 576p (625p), 720p (750p), 1080i (1125i), 1080i (1125i) |
| S-Video/Video | NTSC, NTSC4.43, PAL-M, PAL60, PAL, SECAM, PAL-N |
| Projection size | 965 – 7,620 mm (38 – 300 inches) diagonally |
| Throw distance | 1.0 m – 9.9 m (3' 3" – 32' 6") |
| Optical axis shift | 4:1 (fixed) |
| Keystone correction range | Vertical: approx. ±30° |

| | |
|-----------------------------------|---|
| On-screen menu | Selectable languages: English, French, German, Spanish, Italian, Swedish, Norwegian, Danish, Portuguese, Polish, Hungarian, Czech, and more (selectable languages vary depending on country and region) |
| Installation | Front/rear, ceiling/desk (menu selection) |
| Built-in speakers | 0.5 W (monaural) output power |
| Terminals | |
| PC IN | D-sub HD 15-pin x 1 (accepts RGB/YBPBR signal) |
| VIDEO IN | RCA pin x 1 |
| S-VIDEO IN | Mini DIN 4-pin x 1 |
| AUDIO IN | RCA (L, R) x 1 |
| SD memory card slot | For SD memory card x 1 |
| Cabinet material | Moulded plastic (ABS/PC) |
| Dimensions (W x H x D) | 234 x 65 x 188 mm (9-3/16" x 2-17/32" x 7-3/8") |
| Weight | 1.3 kg (2.9 lbs.) |
| Operating environment temperature | 0° – 40°C (32° – 104°F) |
| Remote control unit | |
| Power supply | 3 V DC (button battery x 1) |
| Operation range*7 | Approx. 7 m (23 feet) when operated from directly in front of the signal receptor |
| Supplied accessories | <ul style="list-style-type: none"> • Power cord • Card remote control • Lithium battery for remote control • RGB cable • Soft case |
| Optional accessories | <ul style="list-style-type: none"> ET-LAP1 Replacement lamp unit ET-TPK1 Ceiling mount bracket |

*1 Compatible with all Panasonic LUMIX digital cameras. For compatibility with other digital cameras, see "Projecting Images from an SD Memory Card" shown below.

*2 The PT-P1SD can display only moving pictures recorded as QuickTime Motion JPEG files with a Panasonic LUMIX digital camera.

*3 DPOF: Digital Print Order Format

*4 To display a slide show, the PT-P1SD must be set to Presentation mode and an SD card containing one set of JPEG image files created from a Microsoft® PowerPoint® file using Image Creator 1.5 must be inserted in the card slot.

*5 The world's smallest and lightest LCD projector as of January 2006.

*6 The projector cannot be placed into a bag until the cooling fan stops operating.

*7 Operation range differs depending on the environment.

Projecting Images from an SD Memory Card

The PT-P1SD can display the following kinds of still images on an SD card:

- Exif2.2 JPEG images that conform with DCF (Design Rules for Camera File System).
- JPEG files created from Microsoft® PowerPoint® files using Panasonic Image Creator 1.5 conversion software.

The PT-P1SD can display the following kind of moving pictures on an SD card:

- QuickTime Motion JPEG files recorded with a Panasonic LUMIX digital camera.

NOTES ON USE

- The projector uses a high-voltage mercury lamp that contains high internal pressure. This lamp may break, emitting a large sound, or fail to illuminate, due to impact or extended use. The length of time that it takes for the lamp to break or fail to illuminate varies greatly depending on individual lamp characteristics and usage conditions.
- The brightness of the lamp will gradually decrease with use.
- The lamp, LCD panel, polarizing plate, and polarizing beam splitter (PBS) are consumable parts. These parts may need to be replaced during the guarantee period if the projector is used for six or more hours per day.
- The replacement cycle of the LCD panel, polarizing plate, and polarizing beam splitter (PBS) will be shortened if the projector is subjected to continuous use for six or more hours. Likewise, the replacement cycle of the lamp will be shortened if the power is frequently turned on and off or the projector is subjected to continuous use for 10 or more hours.

Panasonic®

Projectors Global Web Site

<http://panasonic.co.jp/pavc/global/projector/>

Weights and dimensions shown are approximate. Specifications are subject to change without notice. This product may be subject to export control regulations. SD logo is a trademark. UHM is a trademark of Matsushita Electric Industrial Co., Ltd. VGA and XGA are trademarks of International Business Machines Corporation. Windows and PowerPoint are either registered trademarks or trademarks of Microsoft Corporation in the United States and/or other countries. All other trademarks are the property of their respective trademark owners. Projection images simulated.

PT-P1SD1-06JAN Printed in Japan.